



**KINGSTON EAST
NEIGHBOURHOOD GROUP INC.**

2021-2022 Annual **REPORT**



37th Annual General Meeting
Wednesday 28 September 2022

Contact us

Website: www.keng.org.au

Kingston East Neighbourhood Group Inc.

KENG Meakin Park
177 Meakin Road, Slacks Creek Qld 4127

KENG Tudor Park
71-78 Clarks Road, Loganholme Qld 4129

PO Box 622
Woodridge Qld 4114

T: 07 3808 1684
E: admin@keng.org.au



We acknowledge artist Jeanie Napangardi Lewis for use of her artwork.

Contents

Kingston East Neighbourhood Group Inc. Mission Statement	2
Management Committee and Staff 2021-2022	3
President's Report	4
Treasurer's Report	6
Manager's Report.....	7
Program Reports	
Child Health Partnership Program	9
Community Connections Program	10
Community Development Program.....	12
Communities for Children Program	15
Early Years Place Program	20
Emergency Relief Program.....	21
Family Support Program	23
Home Interaction Program for Parents and Youngsters.....	25
Immediate Supported Accommodation Program.....	26
Kingston East Occasional Child Care.....	28
Older Person's Action Program	29
Personal and Relationship Counselling Program	30
SQW Build a Secure Future Program.....	31
Lucy's Story	33
Susan's Story.....	34
Our Year	35
Auditor's Report	36
Statement by the Management Committee	38
Financial Statements	39
Acknowledgements	41
Tudor Park Submission.....	43

Mission Statement

Our Mission

Connecting People, Building Futures

Our Vision

KENG aspires to create an inclusive, empowered community

Core Values

Our work is guided by:

- Empowerment:** We are committed to assisting individuals to make positive choices in their lives
- Collaboration:** We value the contribution of volunteers, students and community partners and promote a culture of teamwork
- Inclusiveness:** We acknowledge Australia's First People, respect and value diversity and are committed to equality
- Responsiveness:** We are creative and receptive in seeking opportunities to meet individual and community needs and value feedback
- Integrity:** We respect confidentiality, accountability and regard honesty as a priority
- Quality:** We implement evidence based best practice and strive for continuous improvement
- Sustainability:** We are constantly evolving and adapting our practices to ensure longevity and viability

Kingston East Neighbourhood Group Inc. acknowledge the traditional owners of country throughout Queensland and their continued connection to land, sea and community. We also pay sincere respect to our Elders past, present and emerging.

Management Committee & Staff

Management Committee

President	Geoff Leeming
Vice President	Ray Kelly
Secretary	Emma Glencross
Treasurer	Nathan Baker
Committee Members	Fiona Banwell / Aunty Coral Dessaix / Syed Zahir Ul Husnain / Leilani Kami / Hayley Pepper / Jawed Sarwary / Uncle Noel Summers / Aunty Robyn Williams

Centre Programs

Child Health Partnership Program Coordinator	Kylie Jackson
Community Connections Program	Areta Farrance
Community Development (CD) Worker	Ron Mitchell
Communities for Children (CfC) Coordinator	Kim Wright
CfC Support Workers	Melissa Knappstein / Lisa Deland / Julia Godfrey / Janeen Ford
CfC Dad's Support Worker	Hayden Esparon
CD Youth Support Worker	Jeanee Bartolozzi
Early Years Place Program Coordinator	Kylie Jackson
Emergency Relief (ER) Coordinator	Jo Pressick
Family Support (FSP) Workers	Cilla Bertsch / Julia Godfrey
Home Interaction Program for Parents and Youngsters (HIPPY)	
HIPPY Coordinator	Sarah Coffey
HIPPY Tutors	Shanti Sharma / Madeline Teoh / Renata Vasconcelos
HIPPY Administration Assistant	Dorothy Firth
Immediate Supported Accommodation (ISA) Coordinator	Vikki Wilkes
ISA Case Managers	Sarah Luxford / Royce Peckham
ISA Property Manager	Helen Hogan
Kingston East Occasional Childcare (OCC) Director	Satoko Kuroda / Heni Davoren-Hansen
Kingston East OCC Assistants	Fulaaau Tativa / Adam Moosa
Neighbourhood and Care Army (Volunteering Qld)	Maureen Yeow
Older Person Action Program (OPAP) Coordinator	Fayyaahdad Sabdia
Personal & Relationship Counsellor	Lenore Hall / Fiona Muller
SQW Build a Secure Future Coordinator	Suhdara Anandakumar
SQW Build a Secure Future Community Liaison Worker	Louise Poole

Administration

Centre Manager	Kim Wright
Chief Finance Officer	Tania Davies
Finance Assistant	Kym Smith
Administration Coordinator	Ann McCurley
Administration Assistant	Jo Pressick
Administration Receptionist Tudor Park	Selena Jandesu
Cleaner	Maurice Smith
Workplace Health & Safety Officer	Sarah Luxford

President's Report

Geoff Leeming

Well, what a tumultuous year we have all just lived through. The end of 2021 saw the last of the pandemic lockouts, lockdowns, mask wearing and the availability of the fourth vaccine dose. The beginning of this year saw major flooding in Logan City and other communities of Queensland and New South Wales. During this time, Kingston East's staff and volunteers worked tirelessly to deliver programs and services.

For the first time the state government set up "flood recovery centres" in community centres and Kingston East was chosen as flood recovery HQ for the Logan area. More than 70 families attended our centre day after day to receive financial help from all levels of government. The benefit of using community centres at times like this is that we were able to offer other forms of help to the families and individuals. This included food and clothing, counselling, payment of bills, washing facilities and just a place to sit and relax.

Late last year, KENG sold the four units it owned on Defiance Road, Logan Central. These units were purchased by KENG in 1991. The sale of the units and the monies realised will be used to set up a maternity hub at KENG Meakin Park, finance a First Nation program (set up by Logan Elders), pay for a Homeless Day centre at Tudor Park, a youth drop-in centre and much more. KENG's committee and staff are now able to put in place programs that the community needs but not currently funded by governments at KENG.

Prior to the sale of the units, KENG had many discussions with the staff from the Department of Community, Housing and Digital Economy about the future of the property. These discussions took place over a span of five to seven years. The four units were costing KENG thousands of dollars each year in maintenance, providing services for the families in the units and the day to day costs such as rates, yard care and security. These costs were to the detriment of our other programs and services. On June 17,

2022, the department issued KENG with an invoice for \$520,258.60. By the department's own admission, they have no proof these monies are owed (please see attached correspondence and invoice). With advice from KENG's auditors there has been no provision made for this debt within our accounts, however the debt is recognised by Note 10 on page 17 of our audited financial figures.

In very exciting news, KENG's committee in early September this year signed a five-year lease for the Tudor Park Community Centre at 71-78 Clarks Road, Loganholme. KENG now has two footprints in Logan. Our branding will be Kingston East Meakin Park and Kingston East Tudor Park. This opens an exciting future for KENG, its staff and volunteers; and the Logan community. Many, if not all, the programs and services offered at Meakin Park will be mirrored at Tudor Park. But we will also be starting new programs at Tudor Park that currently aren't being offered at Meakin Park. It is our intention to run people movers between the two centres so all programs and services are available to both communities. Attached is our plan for Tudor Park and Meakin Park over the next three years. We are currently negotiating with the State Government for funding for this new centre. I invite everyone to visit Tudor Park and to talk to the staff. We have started to hire new staff for Tudor Park. I welcome all new staff.

This financial year has seen KENG's committee explore and implement many new services with the support and help of our tremendous manager Kim Wright, her staff and volunteers. Starting with a new community centre at Tudor Park, a new scholarship program, a social enterprise at Tudor Park, a First Nation's Program, first steps towards a "BUB Hub" at Meakin Park, two new sub committees and a "dad's" playgroup just to name a few.

The following are our subcommittees as we move forward. Financial Subcommittee, Governance Subcommittee, IT Subcommittee,

Marketing, Fundraising, Partnerships and Memberships Subcommittee, First Nations Subcommittee and Tudor Park Subcommittee - and hopefully moving forward a Bub Hub Subcommittee. These subcommittees have proven very effective in engaging our Management Committee members, staff, volunteers and community friends in helping to steer KENG. The subcommittees meet every second month. I would like to thank everyone that has had an input with these committees.

This year we invited three Logan Elders on to our Management Committee. I thank them for their input. To each and everyone on the committee I thank you for your support. At times we have had some very vigorous and robust discussions. It is with the diversity of intellect and life skills brought to the table that continues to see KENG grow and thrive to the benefit of the community. Ray Kelly resigned prior to the AGM. Ray was KENG's Vice-President and served on the committee for seven years. Ray will be sadly missed. All of us thank Ray for his time and energy and wish him, Margaret and his family all the best for the future.

I would like to thank all KENG funders and supporters. These include the government (local, state and federal), businesses and personal donators. A special thanks to Jim Chalmers (Federal Member for Rankin and our Federal Treasurer)), Shannon Fentiman (State Member for Waterford and our State Attorney-General), Mindy Russell (Logan City Council Division 3) and our new supporters at Tudor Park, Bert Van Manen (Federal Member for Forde) and Miriam Stemp (Logan City Council Division 10).

It seems unfair to single one person out at KENG. Everyone gives a 110%. However, I must pay just a little more thanks to Kim Wright (KENG'S Manager). Kim's ability to hold this community centre together at all times is extraordinary.

Finally, I extend a big thank you and heartfelt appreciation to anyone who has visited or helped our Kingston East Neighbourhood Group over the past 12 months. You have made a positive difference to our community. The people who work here as staff or volunteers make our centres the pride of Logan. Those who benefit from our centres leave in a better frame of mind knowing they are not alone and isolated in our community. Those of us on the management committee, who help manage the centre's progress, feel nothing but pride at seeing the centre continue to grow and succeed.

Geoff

Treasurer's Report

Nathan Baker

Kingston East Neighbourhood Group's (KENG) 2021-2022 financial year has been another positive one for KENG. The Centre has come out of the Covid-19 conditions in a strong position and ready to move forward with expanded services to the community. Nothing demonstrates this more than the expansion into a second location with the taking over of Tudor Park.

Financial Result

The financial year 2021-2022 has delivered another strong financial result for KENG with a surplus of \$250,265 (after capital adjustments). This result was driven by the profit on sale of Defiance Road units for \$635,718 and this sale should help KENG maintain its financial position and fund further services in the longer term. Excluding this sale, KENG made a small profit of \$26,979 so continues to operate in a sustainable way. As a result KENG's carrying a net asset balance of \$1,841,201 an increase from \$1,590,936 in the previous year. The cash position has also improved during the year with KENG currently holding \$1,732,046 in uncommitted funds at 30 June.

As emphasised last year, the strength of KENG is a testament to the management of its programs which continue to be run in a manner that ensures their financial and operational sustainability while meeting or exceeding the required deliverable services. KENG continues to have strong relationships with funding sources, and is in a position to make longer term plans and commitments in relation to services offered and expansion of services.

In previous years we have emphasised that the financial strength of KENG helps it to be seen by potential funding sources as a responsible home for those resources. Also, that it allows KENG to cover programs as needed from time to time. In recent times we have seen a dramatic reduction in the funding from one source due to a change in focus by the Government, which would have required major restructuring of programs. The committee had the flexibility to make the decision

to continue these programs, at least in the shorter term, while alternative funding sources are pursued. This decision was a confirmation of the great work being done, but is only possible because KENG has the resources to cover the costs. The expansion into Tudor Park and the planned expansion of services into this facility are also requiring significant capital expenditure into 2022-2023.

As a result of these activities, there is a planned loss in the next financial year unless new funding is achieved. You will also notice in the financials that there is a note attached to the financials regarding a possible liability to the Department of Housing. This relates to a claim by the Department relating to Defiance road. The Committee does not consider the claim to be payable and we are in discussions with the Department to have the matter resolved in our favour. However, it is a possible liability which, if payable, could impact the financials to a maximum of \$520,259.

Thanks

It has been another busy year and the finance section has had the pleasure of welcoming Tania Davies as our CFO. With the continued help of Kym Smith we have seen KENG's finance section strengthen its financial controls and introduce elements of automation and efficiency gains throughout the year. We expect this to continue in 2022-2023.

Looking to the Future

I think KENG can safely say there is a continuing and growing need for services within the community. KENG is responding to this by looking at ways to increase its reach and range of services. The challenges of funding are a constant, but KENG continues to be in a position to provide a helping hand to those in need.

I look forward to continuing to work with everyone at the Centre.

Nathan

Manager's Report

Kim Wright

Kingston East Neighbourhood Group Inc. (KENG) is proud to reach its 37th year of program and service delivery to the Logan community.

KENG is a high-spirited organisation which is passionate about providing community-informed service. Our first priority is to meet the needs of our diverse community and promote empowerment through access to resources and information. KENG prides itself on its ability to work collaboratively with community and other organisations to support the Logan community to thrive.

We do this by providing support for all age groups through a holistic place-based approach and community-focused programs and services. It's through our work for the community that one can identify KENG's commitment to service and our core values which are Empowerment, Collaboration, Inclusivity, Responsiveness, Integrity, Quality and Sustainability.

KENG has developed our new Strategic Plan for 2021-2024, with a strong collaboration between community members, staff, volunteers, students and the management committee. KENG's new strategic plan sees our organisation prioritising Financial Sustainability; Responsiveness to Community Needs; Recognition and Awareness; Dynamic People and Systems.

It brings me great joy to share that many of KENG's programs have continued into the 2021-2022 and KENG is continuing to receive ongoing funding from Local, State and Federal Governments and Philanthropic groups and local business'.

Throughout the year our community has faced an unfortunate increase in stress surrounding housing, financial security and job stability following both COVID-19 and the Southeast Queensland floods. KENG has been eager to support families who have found themselves struggling, including those who have not required support previously. KENG was

privileged to host the Community Recovery Hub to support the community to access vital government funding, counselling and resources. The Recovery Hub provided community with the opportunity to access KENG's integrated service model.

KENG prides itself on its ability to work collaboratively with community and other organisations to provide better outcomes for the Logan Community.

During the year, we were excited and honoured to be granted the lease at Tudor Park Community Centre from Logan City Council. We have been eagerly awaiting the opportunity to establish our second footprint which has been delayed to flood damage. We are grateful to Councillor Miriam Stemp for assisting us through this process and report we will be operational from September 2022.

A highlight of our year has been hosting the Logan Luminous Lantern Parade at KENG in partnership with Multicultural Australia. Together we delivered two lantern making workshops and supported with the facilitation of the event. Community members enjoyed on the day the festive drumming, cultural dance performances and a shared a meal together. This was a wonderfully enriching event, and we are hopeful to host it again in the future.

Over the year, we were approached by Volunteering Queensland to host the Neighbourhood Centre and Care Army project. This project's aim is to enhance the volunteering experience throughout Queensland. This project has complemented our suite of programs by providing extra support and building on the volunteer's skill sets.

Due to the success of our Back-to-School fundraisers, our Charity Golf Day and The Bash, KENG was able to support 1000 children with a back-to-school pack which included essential resources for school. I want to acknowledge the passion and dedication Geoff Leeming has for

this project for it's ongoing success within the Logan community.

As each year passes, I continue to be incredibly proud of both our staff and volunteers who makes our centre vibrant and welcoming, they support me in so many ways and work under core values with such dedication.

I would like to give my thanks to Ray Kelly, our Vice President, who is stepping down from the Management Committee after seven years of service. His wisdom and professionalism has guided KENG in many ways.

I would sincerely like to thank the Management Committee, who continue to amaze me with their dedication to the community and our vision for KENG. They are constantly working behind the scenes, volunteering their time, expertise and community spirit, pouring hours into the meetings and organisation that has made, and continues to make KENG the vibrant community leader and thriving heart of our neighbourhood that it is today.

I would like to make a special mention of Geoff Leeming, our President, for his time and support that he provides to the centre and to myself as the Manager. He always goes the extra mile for our vulnerable community members,

I am looking forward to continuing to focus on connecting, strengthening and supporting the Logan community in the coming year.

Kim

Child Health Partnership Program

Funded by the Salvation Army through the Australian Government Primary Health Network

Kylie Jackson

The Child Health Pathways Program is an initiative that aims to support parents to access early childhood health services. Parents who are linked with a Thriving and On Track (TOTs) centre are able to be referred into the program. TOTs centres include KENG, Gunya Meta, Village Connect, Access and over 70 Early Childhood Centres in Logan City.

Parents are connected to a Community Support Coordinator who walks alongside families to provide support, advocacy, liaison and connections to child health and early intervention services such as the Early Childhood Approach (ECA), Children's Health Queensland, allied health professionals, the NDIS and community support services.

Kylie Jackson is KENG's Child Health Pathways Community Support Coordinator and works the equivalent of one day a week case managing approx. 10 families concurrently. Primarily, families have been supported to access the ECA assessment process and have mostly been successful with receiving NDIS packages which provide funding for allied health interventions, such as speech therapy, occupational therapy, physiotherapy, psychology and assistance items that increase learning and development opportunities in the home.

Families encounter many barriers to accessing child health and allied health services including a mistrust of health institutions and workers, lack of cultural safety in the provision of health care, financial disadvantage, parental mental illness, extremely long wait lists (some in excess of 12 months), unclear health pathways and fragmented. These barriers have a negative impact on children, who often commence school with little or no health intervention. The Child Health Pathways Project is assisting in ensuring that children receive appropriate health services to improve the educational, health and wellbeing trajectory of their lives.

In addition to the provision of supporting families, the program has connected local community and health agencies in several workshops to educate, inform,

connect and begin to map the pathways in order to improve access and knowledge for families and the sector in general.

A parent workshop was held in May, where a significant number of families attended to share their stories, insights, struggles and suggestions for improvements to the sector. There is a formal report and evaluation being developed as an outcome for the project.

Highlights

While this project was initially a pilot project, the significant impact and success of the program has led to the Primary Health Network extending funding until the end of the 2023 financial year.

The project connects families to vital support services as well as child health services. The picture below is of a child who is now attending KENG's Occasional Childcare and the family is accessing support through the Early Years Place and has committed to joining the 'Jarjums Belonging' Collective.

Many thanks to the Salvation Army and especially Robyn Masters for her ongoing support, mentoring and wisdom.

Kylie



Community Connections Program

Funded by Logan Together

Areta Farrance

The Community Connector role at KENG aims to provide families with connection to services in Logan with a particular focus on helping families access Early Childhood Education and Care for their child. The program is based on research that shows us that a high percentage of children are not able to access early years services in Logan due to many complex barriers.

We know that children attending supported playgroups, HIPPY, kindergartens, and a smooth transition to school are critical steps in building strong foundations for life. The Community Connector role champions early years learning conversations with families, those who care for children, and the broader community. The Community Connector role more broadly also aims to connect families with support whereby the worker 'walks alongside' families as they navigate the early years journey. Part of this role also involves closely working with Logan Together. Logan Together are a collective impact movement that aims to improve health and well-being outcomes for children aged 0-8 years in Logan by working with and responding to community voice.

The Community Connection Program provides:

- Resources and key information answering the common questions families often have about Early years services, such as: cost, centre location and types of programs in Logan.
- An opportunity to grow the number of members of Logan Together so we can all share responsibility for supporting children's wellbeing as a collective.
- Listening to community and responding to what people are needing most for their children.
- Individual and group information sessions 'all about kindy'.
- Connection with key people who can answer questions specific to their circumstance and assist with tasks eg: enrolment forms, transport and childcare subsidy applications.

- Attend and facilitate playgroups to reach families and offer ways to connect

The Community Connector role has been involved in all KENG's programs along with representing KENG and Logan Together at events such as under 8's week, child protection week, Neighbourhood Day, Eats and Beats, NAIDOC, Wilbert the Worm and many more. Families have accessed information about Early Years Education through several ways; An informal face to face chat, sometimes through a referral from an external organisation or often simply from within KENG's programs. The Community Connection role teams well with existing programs to provide much needed support regarding the transition to kindergarten and then school.

Some barrier breaking outcomes of this program that may not have happened without the Community Connection role:

- Families having a chance to receive information about early years services on the spot.
- Tours of kindergartens, including an organised and a meet and greet with the kindergarten/ Prep teacher.
- Increase in enrolments and fewer obstacles for families.



- Increased connection between KENG programs and external services.
- Parents and carers overcoming anxieties about their child starting kindergarten and school.
- A supported bush playgroup at Daisy Hill that has sparked a passion amongst community for nature play and self-organised meet ups.



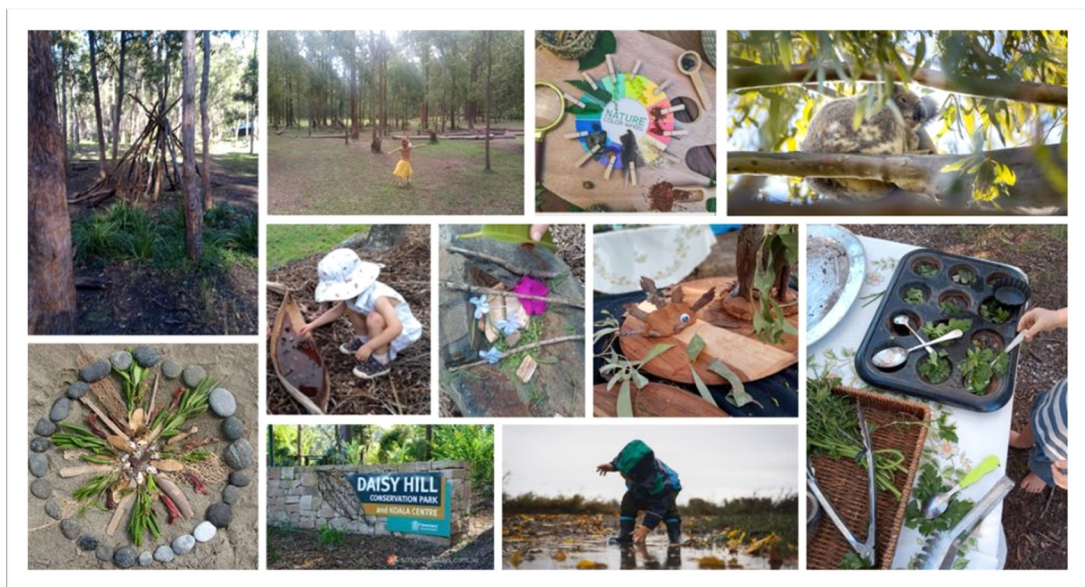
Thank you

Thank you to the Families, Staff and Committee at KENG for embracing this program and utilising it as a resource. Your open communication, passion, and open-hearted attitude makes it easy for this role to assist people in the best way possible.

Highlights

Watching children start in HIPPY, baby massage or playgroup, then attend occasional childcare, then kindy then school is a beautiful progression. It's an honour to support and observe these connections form and see parents and carers confidence grow as their child grows.

Areta



Community Development Program

Funded by the *Department of Communities, Housing and Digital Economy*

Ron Mitchell

Ron Mitchell has been working in the role of Community Development (CD) Worker at KENG since December 2019; and has thoroughly enjoyed the experience. KENG operates within a community development framework and integrated service model with a strengths-based approach that recognises our clients as the experts in their own lives. The following overview describes the CD Worker's contributions and achievements over the past 12 months.

Volunteer and Placement Student Coordination

The CD Worker is designated overall responsibility for coordinating volunteer and placement student opportunities at KENG. Volunteers and placement students were recruited, trained, and supported to assist with KENG's range of programs, services, and events. KENG's staff members engage with our volunteers and placement students in respectful and reciprocal professional relationships; we value their contribution and seek to optimise their experience at the centre. Volunteers are deployed throughout the centre, with the demand primarily from Emergency Relief and Occasional Childcare. The CD Worker places advertisements, when required, for KENG's volunteers through Volunteering Queensland with SEEK Volunteer and Go Volunteer. There were a number of placement students from Griffith University at KENG over the past 12 months. series Placement students are mentored, supervised and assigned meaningful and achievable tasks by KENG staff members, and are encouraged to attend network meetings and pursue relevant professional development opportunities at KENG.

KRANK School Holiday Activities

KENG has a long-established practice in providing KRANK School Holiday Activities funded by Logan City Council. The CD Worker coordinated KENG's KRANK school holiday activities offered by the centre to Logan school students: in July and September 2021; and in January and April 2022. These school holiday

activities, with experienced facilitators, included the well established activities *Dads and Kids Bushwalking and Barbeque*, *Gardening Club*, *Kids in the Kitchen*, *Slime Workshop*, *Unlimited Animations*, *Youth First Aid*, and *Kids First Aid*. In addition two new KRANK school holiday activities were introduced by KENG: *Creative Art Workshop* in July 2021, and *Cultural Storytellers* in September 2021. The CD Worker was requested by Logan City Council to arrange for photoshoots – with the agreement of the participants and parents / carers – of KRANK school holiday activities in September 2021: *Kids in the Kitchen* and of *Dads and Kids Bushwalking and Barbeque* (which itself was not a scheduled activity at that time, and required a creative approach to enlist participants).

NILs and SPER Debt Resolution Programs

KENG is an established Client Support Provider for the No Interest Loans (NILs) with Good Shepherd Australia. NILs is a service that provides individuals and families on low incomes with access to safe, fair, and affordable credit for essential goods and services for up to \$1,500 with no interest, fees or extra charges applied. Many clients (individuals and families) in Logan on low incomes and facing economic hardship are eligible for this assistance. KENG's NILs program assists clients to avoid debt traps from predatory lenders, increases their financial literacy and personal resilience, instils a sense of independence, and improves their quality of life. During July and August 2021 KENG's NILs program faced challenges to its survival with a number of trained NILs volunteers leaving for various reasons. KENG's long-term NILs volunteer Leenore Reddy, after 16 months of dedicated service, provided a handover on Wednesday 18 August 2021 to the current NILs team – the CD Worker and his wife serving as a volunteer. For this year, there 33 NILs loan approvals over 12 months.

KENG is registered as a SPER Hardship Partner. The CD Worker administers the SPER Debt Resolution Program which has been

beneficial to the centre and our clients; who have been enabled to reduce and even resolve their SPER debts through attending approved activities, counselling, and volunteering. During the year, a number of eligible clients with manageable SPER debts have been placed on Work and Development Orders (WDOs), and some participants have already had their fines fully paid off through these WDOs at KENG.

Information Sessions, Workshops and Guest Speakers

KENG's CD Worker has a passion for engaging with and informing the local community, enhancing the local and regional profile of KENG, and increasing our presence and influence in Logan through organising a series of information sessions and workshops hosted by KENG with enlisted partners and invited expert presenters around key issues of interest and concern to Logan's residents. The information sessions and workshops included the in-person *Energy Literacy and Efficiency Workshop* with presenter Like Reade from YFS on Wednesday 28 July 2021; the online *2021 Census Information Session* with presenter Pip Giles from the ABS on Wednesday 4 August 2021; the in-person and online *CALD COVID-19 Vaccines Information Session* with presenters Grace Edward and Dr Rachel Claydon from Mater Hospital on Wednesday 25 August 2021; the *Disaster Preparedness Workshop* with Amanda Rosman, Senior Disaster Management Officer from Logan City Council on Wednesday 10 November 2021; and a reprise of the *Disaster Preparedness Workshop* with Leisa Tocknell, Disaster Management Officer (Recovery) on Wednesday 4 May 2022. The CD Worker arranged for guest speakers for the in-person and online *Logan Interagency Network (LIN)* meetings that were hosted by KENG during the year: Sgt Greta-Lee Greig and Sgt Peta Yarwood, Security and Counter Terrorism Officers, Queensland Police Service on Monday 11 October 2021; Alba Perez, Logan-based Multicultural Service Officer with Services Australia on Monday 6 December 2021; and Andrew Osedo, Engagement Officer with the Australian Electoral Commission (AEC) on

Monday 7 February 2022. Lisa Crawford, Regional Director, Queensland and Northern Territory, Department of Home Affairs, was enlisted by the CD Worker as a speaker at the KENG AGM on Tuesday 28 September 2021.

Professional Development Courses at KENG

As a member of the Logan Dementia Alliance, the CD Worker has maintained a partnership with Dementia Australia for KENG to host fully funded and nationally accredited *Dementia Essentials* professional development courses in October 2021, March 2022, and May-June 2022. This course runs for 18 hours over three days over consecutive weeks, and were presented at KENG for local carers and health professionals. The CD Worker has also been working with Lifeline Australia towards KENG hosting fully-funded and nationally accredited 2-day Lifeline *DV-alert Workshop* as professional development for local frontline community workers. The first of these courses was on Wednesday 15 and Thursday 16 June 2022.

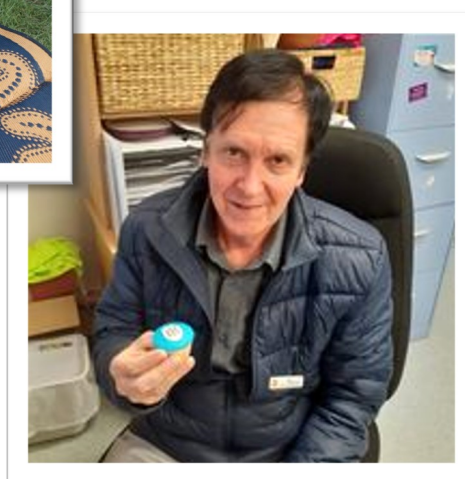
Community Events

On Wednesday 22 September 2021, KENG presented the inclusive multi-faith *Oneness of Humanity: Prayers for Peace in Afghanistan* COVID-safe event at KENG for 30 people. The emotional and spiritual gathering, faith leaders and representatives from Islamic, Buddhist, Bahá'í, Jewish, Hindu and Christian traditions shared prayers, expressed their support, and reflected on the impact of the humanitarian crisis on the population in Afghanistan, and on the wellbeing of the Afghan diaspora globally. The guest speakers on the program included First Nations Elder Aunty Robyn Williams; Queensland Senator Paul Scarr; Scott McDougall, Queensland Human Rights Commissioner; and Claire Moore, former Queensland Senator and President of the QLD Division of the United Nations Association of Australia (UNAAQ). Everyone was invited to participate in the candle-lighting ceremony reflecting the collective spirit and expression of solidarity with the people of Afghanistan: PRAY

FOR PEACE. On Saturday 18 December 2021, KENG was part of the team who brought the inaugural *African Women's Dinner Dance* for Queensland at the Diggers Services Club in Logan Central. This COVID-safe event of 70 people was successful and included our special guest Rosemary Kariuki (Australia's 2021 Local Hero). On Friday 25 March 2022, KENG had an event in Meakin Park to celebrate *Neighbour Day*. This event brought together neighbours, clients and like-minded organisations to celebrate the gift of neighbourhood connection. The stalls from KENG's programs and our stakeholders including Logan Together and Caxton Legal Centre had displays and family-friendly activities to help address the challenges of COVID, the floods, and loneliness in our community and neighbourhood, one relationship at a time.



Ron



Communities for Children Program

Funded by the Salvation Army Communities for Children Initiative through the Department of Social Services

Kim Wright, Lisa Deland, Julia Godfrey, Janeen Ford, Melissa Knappstein, Areta Farrance, Hayden Esparon.

The Communities for Children is a vibrant program designed to meet the growing needs of families, children, parents, and caregivers within the Logan district. The program is funded by the Salvation Army Communities for Children initiative through the Department of Social Services.

Primarily based at Kingston East Neighbourhood Centre, where several groups are delivered, our services are also offered at nearby Loganlea Community Centre, Kingston State School, and Logan Village.

The programs offered through this initiative are child and family focused, promoting positive relationships and personal growth. Such programs are soft entry points, drawing upon additional support systems within the wider KENG community and beyond, should additional, individual needs be identified. The programs are designed to offer support and guidance to parents within a safe, friendly and accessible environment. There is a strong emphasis on building community relations.

Supported Playgroups

Supported Playgroups provide an opportunity for families to socialise with others within a safe and caring environment. It's an opportunity for children to develop and build social skills and for parents and caregivers to connect. The ancient African proverb "It takes a village to raise a child" speaks volumes. Enrolment in our Playgroups brings a wealth of opportunities, support and knowledge for local families and forms a crucial first step in Early Years Education.

Playgroups are a wonderful place for parents to receive important information regarding child health and development, together with the opportunity for young children to investigate and explore alongside like-minded peers. We offer a wide range of challenging activities for the children to enhance skills and build confidence. We also value the opportunity to actively encourage and engage parents in play experiences.

At KENG we currently facilitate five local playgroups:

- Praise Playgroup (KENG) Monday
- The Village Playgroup (Logan Village) Tuesday
- Stay and Play Playgroup (Loganlea Community Centre) Wednesday
- Kingston State School Playgroup (Kingston) Thursday
- 3a Playgroup (Rainbow House) Friday

Each of these playgroups are unique in the way they serve the needs of the local community and the individuals in attendance. Our facilitators identify and recognise the strengths and needs of each group, developing programs accordingly. A healthy morning tea is provided at each session.



Hello Baby

Hello Baby is a program offered to families with a child under the age of one year old. Guided by attachment theory, parents are taught basic baby massage techniques, encouraging them to bond with their child within a supported environment. Sensory activities, singing and reading are among the activities that are offered during this class.

This safe space allows parents to bond with their child whilst meeting other like-minded parents and receiving guidance and support from trained professionals, including a Queensland Maternal and Child Health Nurse.

This is a popular program, offering new mothers an opportunity to re-connect and adjust to life as a parent.

The Hangout



The Hangout is a weekly program held at Loganlea Community Centre, primarily aimed at school aged children.

The aim of the program is to provide a safe place for the children to socialise and simply 'be'. Staff and students share the same goals of being available to talk and interact with the children while building relationships in a trusting, nurturing environment. There is a diverse cultural mix in the group which is accepted and embraced by all members.

A hot meal is served with children all sitting together at the table, engaging in family-like banter! After it was identified that there was a lack of connection within the group, leaders have worked hard to create trusting relationships with the children in an inviting, caring and safe environment.

We also spend time at the local park playing many traditional games such as 'Red Rover', watching them perform tricks at the skate park and play at the playground. Games of handball and card games are also favourite activities which produce much laughter and fun competition. These children value very simple things and don't crave screen time or computers.

It has been a humbling experience to recognise that the children simply want adult attention, a listening ear, tasty food and time in a safe environment. We are more than willing to provide this for them and enjoy watching them grow in confidence and maturity. "Familiarity, consistency and security are crucial components, together with acceptance, understanding and forgiveness."

Great Mates Meet

The Great Mates Meet is a weekly program that offers men in the community a place to come chat, relax, and have a laugh with other likeminded men. The program uses the space available out the front of our centre, providing seating, shade, and access to our centre's amenities and kitchen. There is a selection of healthy food options available, as well as a BBQ

cook up.

Our participants are free to come and go as they choose, as we are always an open door to both casual attendees, and familiar faces. The men who attend Great Mates Meet often find themselves using other services within the centre, such as the kitchen for coffee, and the ER for food packages. They are also referred to our other programs during the week that they may find relevant or interesting.

The men attending this program often demonstrate the importance of male relationship building, preventing isolation, peer to peer counselling and mateship. These qualities have also been proven through feedback of the

attending men, citing the importance of the continued and consistent running of the Great Mates Meet, and this impact this has had on their well-being.

The Great Mates Meet will be looking at improving our accessibility, events, and positive outcomes as we expand our attendance and interest in the health and well-being of men within the community.

Dad's Time

Dad's Time is a playgroup for dads, granddads, uncles and other men in the family to bring their young ones for some fun activities, free play and healthy morning tea. The playgroup focuses on building the relationship between father and child, as well as providing dads with male-to-male support. Utilising the playground and child care spaces in the centre, children are allowed to freely play and explore the areas and activities set up for the day. The program encourages men to engage in play and



interaction with their children, while also having other men to discuss the roles and challenges of fathering with.

The playgroup has found success in allowing children the freedom of play, while also providing options of stimulation through planned activities. This allows the men to take part in the play time, or if needed, take a break to talk to other men. The attendees are provided with a healthy lunch, that has both child and adult options, as well as a drop in and out environment.

The attendees have reported Dad's Time to be an exciting option for the weekend, as many are working or otherwise committed during the week. There is also a consensus that having more programs for men and their children is welcomed within the community and is just the thing some families have been looking for.

Dad's Time is excited to increase our attendance and options for activities and play going into the rest of the school year.

Parenting Programs

Communities for Children offer a range of parenting programs which are accessible to all community members. Courses are frequently run during term times.

These courses offer support, information and strategies to parents and caregivers on raising healthy children. Often groups are small in numbers offering a more personal and interactive experience, allowing participants to actively engage within the group whilst the

facilitator is then able to structure and plan the sessions to meet their specific needs.

The parenting programs offered at KENG include:

- Circle of Security
- Bringing up Great Kids
- Wheel of Wellbeing
- 123 Magic
- What were we Thinking?

Due to the changing nature of the guidelines of the recent funding for the Communities for Children program we are now able to tailor our programs towards meeting the specific needs of the community in which we serve. This change will now enable us to deviate slightly from what could be considered a structured form of the above-mentioned evidence-based programs, giving us the opportunity to truly meet the needs of our ever-changing community.

We recognise that our programs are in place to guide and inform parents, with the view of enriching caregiving. We look forward to the challenges that the year ahead brings as we continue to assist parents grow in what is the most important role in their lives.

Highlights

On reflection, it would be fair to say that every day is an emotional rollercoaster, bringing unimaginable challenges, joy and pleasures. It is the community spirit at KENG, together with the unconditional support and encouragement of colleagues and management that brings the



strength and determination to achieve great outcomes for our families.

The highlights come in knowing the appreciation that our families have for us and in recognising that there is an army of people around us to support us as we strive to meet their needs. It is knowing that with the connections we have, we are able to assist them to achieve almost anything.

In the Hangout, it is the glowing faces of the children as they sit to eat a hot meal, knowing that they will not go to bed hungry that night. It is knowing that the children have appreciated simply being cared for and listened to, as they share food and laughter and a game with adults who are there for them. One afternoon the group created a large painting with stamps and rollers. A staff member used the art work to create a range of gift cards which KENG has subsequently used during the year.

In September 2021, The Hangout went on an excursion to the Queensland Museum. The group consisted of 10 Hangout participants with 3 KENG staff, along with 10 parents and 22 supervised children. A coach ride from KENG in to Southbank added to the fun adventure which the children still speak about a year on. Special thanks to Queensland Museum for covering with the entry cost.

Playgroup highlights include seeing parents grow in confidence as they play and interact with their children. Watching children develop self-control, increase in curiosity, engage in different types of play and discover how competent they are is very rewarding. Assisting families to engage in a cross-section of KENG programs and benefit from entering Hippy, commencing a TAFE course, using the onsite occasional childcare or craft groups shows the breadth of what we can offer the community.

Occasional Childcare

We are truly fortunate to be able to offer Occasional Childcare (OCC) at KENG. This centre offers a unique, 'home from home' service catering for children and families from

many diverse backgrounds. It is a service which offers both flexibility and consistency for families in need, with the quality of care given second to none.

We would like to acknowledge the tremendous efforts of all the educators and volunteers who put their heart and soul in to creating such a thriving, positive and welcoming learning environment. We would also like to extend a warm welcome to Satoko, who took over the role of Director, replacing Heni.

The Occasional Childcare is a crucial service accessed by several of our parents attending parenting programs and is free to all parents attending programs at KENG.

The centre follows the principles and guidelines outlined in the Early Years Learning Framework, with daily practices and procedures also informed by the National Quality Standards.

Thank you

Once again, we would like to acknowledge and express our appreciation to the Kingston East Neighbourhood Group Management Committee, staff, volunteers and students for their dedication and continued support of the Communities for Children program, and to our families who continue to access our services and place trust in us as we assist them in navigating through the challenges of parenting the next generation.

Kim

Early Years Place Program

Funded by the Department of Education - Early Childhood and Community Engagement

Kylie Jackson

Our families are enjoying the many benefits of the Early Years Place (EYP) at KENG where they can access a range of early childhood activities, playgroup, wellbeing programs, parenting education, occasional children and family and parenting support. These programs provide a soft-entry approach to KENG's integrated service and improves access for families to connect with other targeted programs such as the child health pathways support, HIPPY counselling, housing support, emergency relief, Skilling Queenslanders for work and the wellbeing and therapeutic programs offered at the centre. The strong relationships and connections between the Early Years Place and other local services have allowed for more effective referrals between services and resulted in the development of various joint initiatives, a shared understanding and common goals for supporting families and children to thrive

Programs and activities offered in the Early Years Place in 2020/2021 include:

- Praise Playgroup
- 3a Playgroup (at Rainbow House and Tudor Park)
- Circle of Security Parenting Program
- Magic 123 & Emotion Coaching
- Wilbert the Worm Literacy Days
- Hello Baby (Baby Massage & Music)
- Wellbeing groups
- Child Protection Week – Family Fun Day
- Intergenerational Sewing Group
- BUMP- Young Mothers Mentoring Program (at the Family Place)
- Back to School project
- Occasional Childcare at no cost to families who are accessing programs in the Centre

We are grateful to all of our partners, including Children's Health Queensland, Communities for Children, Rainbow House, Baby Give Back, Logan Together and The Family Place for your ongoing support.

Many thanks to the Rotary Club of Logan and Fibswap for their ongoing financial

support that enable us to continue to purchase quality early childhood books for our Wilbert the Worm Literacy Program.

Highlights

The Department of Education granted extra funding to the Early Years Place. This will allow us to expand and explore new opportunities for our children and families in Logan. This funding enhances the work at KENG so we can continue to support effective parent engagement, children's social, emotional, physical and educational opportunities.

Kylie



Emergency Relief Program

Funded by Department of Communities, Disability Services and Seniors & Department of Social Services through the YFS ER Consortium

Jo Pressick

The Emergency Relief Program (ER) is funded by the Department of Social Services (Commonwealth) and the State Government.

Emergency Relief funding assists service providers to deliver emergency, financial or other assistance to individuals and families in immediate financial crisis. Its objective is to assist people to deal with their immediate crisis in a way that maintains dignity and encourages self-reliance.

Providing care, compassion and support to all who walk through KENG's doors is what we do best.

The suburbs we service for bill assistance and vouchers are:

- Kingston
- Slacks Creek
- Loganlea
- Tanah Merah
- Meadowbrook
- Woodridge

There is no catchment area for food parcels.

In the past 12 months, we have provided:

- 2677 food parcels (feeding 3184 adults, 3643 children)
- 711 food and fuel vouchers
- 90 electricity bills
- 32 rental payments
- 52 "other" bills including prescriptions, school uniforms, birth certificates, medical items, baby formula & nappies.

Our total number of registered clients is 6322, an increase of 690 clients in 12 months.

Staff & Volunteer Training

- Mental Health First Aid
- Housing and Homelessness in Logan
- Suicide Prevention
- Beyond Training (LGBTQ+)
- Emergency Evacuation Training
- Volunteer ER training @ LECNA
- Stronger Smarter Institute Training.

Networks and connections

- YFS Logan
- Logan Emergency Relief Services
- Logan City Council
- Twin Rivers
- Burringilly Aboriginal Corporation
- Serving Our People
- Foodbank
- 4 Voices
- Yarrabilba Stakeholder Collaborative Network
- Logan Police Multicultural Unit
- Knit for Charities
- Department of Youth Justice
- Uniting Care Community
- The Salvation Army
- Brisbane Basket Brigade
- Share The Dignity
- Big W Loganholme
- Caring Cases
- QPASTT
- Girls Day out in STEM providing gift bags to inspire more girls into science, technology, engineering and maths (STEM).

Providing so much assistance to Logan residents would not be possible without the help of our inspiring, amazing volunteers. I would sincerely like to thank everyone who has given their time and compassion to help those less fortunate. Thank you to Geoff Leeming, Dorothy Firth, Jenny Cheng, Trevor Leonard, Gail Dionysius, Amanda Harper, Matthew Purnell, Geeta Chandar, Petronilla Lau, Sussan Poulter and Eileen Carolan. We love showing our younger generation about the realities of life for some people. We have had staff and volunteers' children Vanessa, Jodie and Keeley helping out on school holidays.

Thank you also to the amazing students doing placement at KENG.

Highlights

- Providing Back to School Packs to Logan children.

- We have received a very large number of donations this year which has been very much appreciated by our clients.
- Qld Premier, Anastacia Palaszczuk visiting KENG and doing a Press Conference.
- Volunteers Jenny, Pet and Geeta won Wonderful Women of Waterford awards. Gail and Manager, Kim, attended a lovely function at the White House of Waterford where Jenny, Pet and Geeta were presented with awards by Honorary Shannon Fentiman.
- Volunteer Geeta also received an award from the Honourable Cameron Dick.
- Attending the Gunya Meta Graduation for our admin trainee.
- Providing warm clothing to those sleeping rough.
- Celebrating Diwali, organised by Geeta and Shanti.
- Helping an indigenous child to attend the annual bush camp
- Volunteer Christmas lunch
- Hosting the Qld Government Community Recovery team.

apply for a placement. I also share it with another group in Nambour who offer similar support to people with disabilities.

Merry Christmas Ellen Hiscock- Bowman

The Qld Government Community Recovery Team work all over Australia, helping community members in times of disaster and crisis. We received wonderful feedback about how helpful and welcoming the staff and volunteers are at KENG. KENG is the best place they have been stationed at.

Jo



Client Feedback

I have tried calling all the Emergency Relief support services. No one would help me, you are the first one to be kind and tell me to come in for a chat. I left my abusive partner and am very desperate for help. I have no money or ID. He left me with nothing. Thank you for not being judgemental and for the food and voucher. It's nice to know there are still people who care.

Thank you to KENG for being such an innovative program and such practical support to our community.

I use the newsletter to give to young people I meet in the community who are studying social work or any related area

To encourage them to visit KENG or



Family Support Program

Funded by the *Department of Communities, Housing and Digital Economy*

Cilla Bertsch and Julia Godfrey

The Family Support Program provides support for families with children from birth to 12 years in the Logan Community. The program is an early intervention/prevention model that works from a strength-based framework and in collaboration with other KENG programs. Support is responsive and timely and includes in-home visiting (70), transport (8), advocacy (10), crisis support (6), parenting programs, resource provision and information, advice and referral.

An overview of the year

The pandemic continues to impact the way the Family Support Program has been delivered in 2021/22. Home visits are dependent on the wellness of the client and their family as well as the Family Support Worker. Telephone support has been provided where necessary.

Family Support Workers have:

- Continued to participate in the Family Support Collective monthly meetings via Teams
- Attended, supported and networked within local events such as Wilbert the Worm Literacy Events, Harmony Day, Child Protection Event, Neighbour Day sausage sizzle in the park, Perinatal Anxiety and Depression Awareness Day (PANDA)
- Delivered two Circle of Security parenting programs
- Facilitated the 1,000 Hearts kindness and compassion project activity as part of our events and activities
- Attended the Prayers for Peace in Afghanistan event
- Assisted in packing 1,000 Back to School bags
- Supported the Queensland Women's Week morning tea attended by Attorney General Shannon Fentiman and Cr Mindy Russell
- Attended the launch of KENG as a Community Recovery Centre following the floods in March 2022. This was attended by Premier Palaszczuk and other dignitaries

- Participated in Performance Development Planning with the Manager
- Supported the Logan Village Playgroup
- Supported the Occasional Childcare Centre with breaks
- Organised the update of First Aid Kits for Slacks Creek, Occasional Childcare, excursions and Tudor Park.

Supported clients to access other KENG programs including:

- Early Years Champion
- Back to School Packs
- NILS loans
- Flood Relief
- HIPPY program
- ISA
- Counselling
- ER.

Highlights

Supported the planning and hosting of the first ever exciting Luminous in the Neighbourhood Event in partnership with Multicultural Australia. There were two lantern making workshops prior to the event for community members to make their own lanterns. The giant platypus and cockatoo lanterns arrived in a joyous burst of music to join us for activities, food, drumming, multicultural dancing, music and festivities. We are hopeful that this will become an annual event for our families and community members



to celebrate and welcome as well as be welcomed.

Supported the excursion to the Lego exhibition at the Museum for The Hangout. The children were transported by bus to and from the Museum and had snacks and Subway for lunch. It was an adventure that the children would otherwise not have the opportunity to be part of.

It has been gratifying to again be welcomed into clients' homes and lives. We look forward to another year of positive outcomes and relationships as we work together to create healthy and harmonious families.

Cilla and Julia



Home Interaction Program for Parents and Youngsters

Funded by the Brotherhood of St Laurence initiative through the Department of Social Services

Sarah Coffey, Dorothy Firth, Shanti Sharma, Madeline Teoh, Renata Hammond

HIPPY (Home Interaction Program for Parents and Youngsters) is a two-year home based, early learning and parenting program for families with young children. HIPPY provides parents/carers with the confidence and tools to support their child's education and helps them create a home learning environment which improves their child's school readiness and parent-child relationship.

HIPPY Logan has been delivering HIPPY across Logan City for 14 years promoting fun learning experiences to 55 families each year. HIPPY Logan is passionate about supporting and empowering our HIPPY families to be their child's first educator.

Over two years (the year before and after starting full-time school), HIPPY children work through weekly or fortnightly educational activity packs with their parent/carer. The packs are delivered each week by the HIPPY Tutor, Our HIPPY Tutors are parents who have participated in the HIPPY Program.

In the past year, 23 families have graduated from HIPPY Logan which is an incredible achievement. A fun graduation was celebrated with both Age 4 and Age 5 families having fun in Meakin Park. The families enjoyed Barn baby animals, party games and Sparky Do Dah (children's entertainer). A formal celebration was held at KENG afterwards for children who graduated from our 2020-2021 cohort.

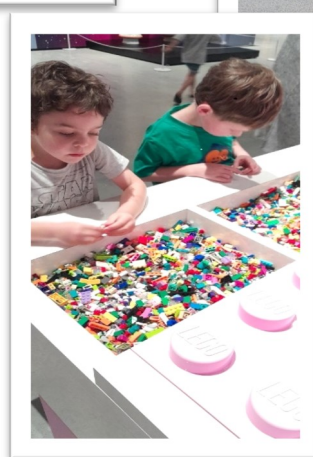
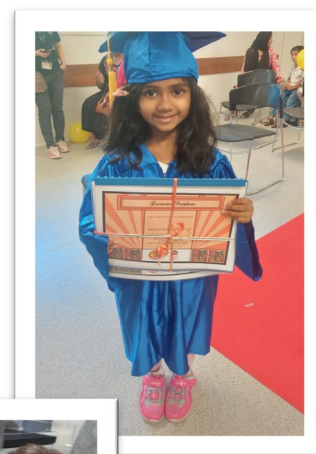
In recognition of the percentage of our families who graduated in 2021 HIPPY Logan was successful in receiving a Performance Payment from HIPPY Australia. During 2020-2021 Cohort 89% of our HIPPY families graduated. The Performance Payment from HIPPY Australia recognises both the Coordinators and Tutors successful engagement with families and our ability to support children to succeed at school. We feel lucky to work with our families and their

children. We enjoy our Home and centre visits, our HIPPY Group Meetings, and our HIPPY excursions to help celebrate our families on their HIPPY learning journey

80% of our HIPPY families met with HIPPY Australia's POA (Priority of access) I am extremely proud of the HIPPY Team and all our achievements over the last 12 months we have faced many challenges over the past year, and we have worked hard to ensure our families received the HIPPY program each week.

I would Just like to take this opportunity to thank the Management Committee, Manager Kim Wright, Admin ETO Dorothy Firth and HIPPY Tutors Madeline Teoh, Shanti Sharma and Renata Hammond for all their hard work and dedication to the HIPPY Program.

Sarah



Immediate Supported Accommodation

Funded by the *Department of Communities, Housing and Digital Economy*

Vikki Wilkes, Helen Hogan, Sarah Luxford, Royce Peckham

KENG receives funding from the Department of Communities, Housing and Digital Economy to operate a Specialist Homelessness Service that offers temporary housing linked with targeted case management support to those who are homeless or at imminent risk of homelessness. The service is termed Immediate Supported Accommodation.

KENG manages thirteen department-owned properties under the Immediate Supported Accommodation (ISA) program which range from three to four-bedroom, detached houses situated across the District of Logan City. As such, any KENG ISA properties that become available for tenancy are generally offered to homeless family groupings requiring temporary housing. Vacancies are listed on the Queensland Homelessness Information Platform which can be accessed by all Specialist Homelessness Services situated across Queensland who may wish to refer clients to KENG for housing assistance in the form of crisis accommodation.

The KENG ISA team strive to work collaboratively with our clients to maximise their capacity for independent living through a coordinated response to address barriers and create pathways to safe, secure and sustainable housing. Some of the services that can be accessed through KENG ISA include but are not limited to:

- Collaborative needs assessment and goal planning with our clients.
- Development of client skills to successfully secure and sustain long-term tenancies.
- Connection to programs and support groups appropriate to individualised client needs.
- Advocacy and assistance to link with specialist services.
- Offer of targeted follow up support to clients exiting the ISA program.

Over the past year, the KENG ISA team have noted a vast increase in the number of families requesting support from our team after being informed by their renting agent that the owner of

the rental wished to either sell or reclaim the property for personal use. Many of these families stated it was the first time they had ever experienced homelessness and were unsure of the processes involved in help-seeking.

Highlights

One highlight for the ISA team was being advised by our Contract Officer from the Southwest Contract Management team that KENG had been granted a little over \$4000 in *Emergency Brokerage* funding to be distributed in accordance with *Emergency Brokerage Funding Guidelines* to those impacted by the recent Southeast Queensland flooding event. Over the following three months, our team were able to financially assist four (4) families housed in KENG ISA properties by covering costs associated with removal and disposal of household goods that had sustained damage as a result of the February weather event. One family housed by KENG ISA after becoming homeless following the weather event received assistance to pay a final invoice for storage costs thus allowing the family to remove personal belongings from storage and recreate a home environment in their new ISA rental. The residual monies were spent on the purchase of 2 x \$100 KMART vouchers which were distributed to two additional ISA families that were able to replace household goods which were damaged as a result of the weather event.



Another highlight of the past year was the engagement of both ISA Case Managers in the Logan Advance to Zero campaign through their contribution of ISA client information, with the informed consent of our clients, to the Logan Zero By Name List and the Vulnerability Index Specialised Prioritisation Assistance Tool (VI-SPDAT) in addition to participating in fortnightly MS Teams meetings with other Logan Zero campaign participants. To date, this action has led to an amazing housing outcome for one vulnerable ISA family who transitioned swiftly to a public housing with financial support offered by the Logan Zero team in the form of brokerage funds to pay for removalist costs.

Vikki



Kingston East Occasional Childcare

Funded by Kingston East Neighbourhood Group Inc.

Satoko Kuroda

The Kingston East Occasional Child Care is a unique Children's service that provides a rich learning environment for young Children on a short-term basis. Our aim is to provide a warm and nurturing environment for families to use when attending programs at the Centre, or as a transition in preparing their Children for an additional early childhood setting.

Offering a low-cost hourly rate ensures that all families have the opportunity to access an educational facility for their Child and for many it is the first early childhood experience. The Childcare is a significant element to the Community centre with almost 80% of families accessing Childcare being actively engaged in programs within the centre. Having families stay onsite allows for flexibility within the program.

We have the privilege of working with such beautiful Children and their families and we strive to teach and role model skills which will assist in their lifelong developmental journey. We endeavour to build trusting relationships with families, which allows us to ensure that all children's needs are catered for, and that learning can be fostered even in their very short stay.

Highlights

There have been big staff changes this year.

At the end of last year Judy and Heni sadly moved on and we are appreciative of their service in the childcare. Early this year, dedicated staff Adam left to pursue another profession. We are grateful for these people's service over the years. I have learned so much from them.

I have started a new role as director in the Occasional Childcare from the beginning of this year.

It has been a privileged working with families in

childcare and continuously working with staff and committee members. I have learned how important the childcare is in Kingston East Neighbourhood Group. I have been learning many things since I have taken over the position.

In April, we welcomed Flower (Fulaaau) as our assistant. Flower is a very gentle speaking person, so she fitted in to occasional childcare very well. Over the course of months, she has been more confident in organising activities for her Diploma of Childcare studies and speaking to parents. We feel very comfortable working alongside each other and make a great team.



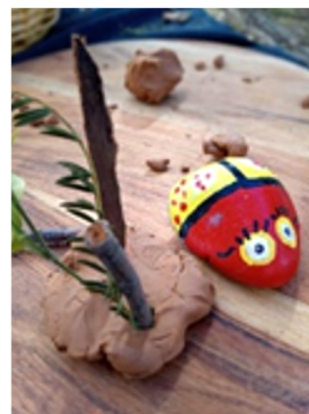
This year, we have again welcomed students. From Griffith University we had Ahday and Savannar who were very professional and great to work with. They supported us in many ways. We have also welcomed Sary and Manusha from

Advanced Education and Training. Currently we are working with two occupational therapy students from Griffith University. They are also very professional and help us to manage in OCC.

Thank you to the KENG family, who we enjoy working alongside and continually learning from a wonderful group of dedicated staff. We would like to thank Council and the great Management Committee for their ongoing support and assistance.

Thank you!

Satoko



Older Persons Action Program

Funded by the Department of Seniors, Disability Services and Aboriginal and Torres Strait Islander Partnerships

Fayyaahdad Sabdia

The Older Persons Action Program (OPAP) program at Kingston East Neighbourhood Group aims to enhance the safety, wellbeing, and quality of life of older members in the community by providing opportunities to:

- Create meaningful connections and prevent social isolation/loneliness
- Contribute to the community and share individual stories, skills, and knowledge
- Have access to a range of health and wellbeing programs
- Have their interests and needs identified and provided with access to necessary support, advocacy, information, and resources.

Collaborations and Networks

The Older Persons' Action Program is enhanced through strong collaboration with Logan City Council, the Logan Seniors Network, the Logan Interagency Network, and the Dementia Alliance.

Highlights

Many of our older members of the community have been significantly impacted during the pandemic. The pandemic has increased the prevalence of loneliness and social isolation. It is wonderful to see an increase in attendance at groups, as we all learn to adapt to living with Covid; and the positive impact it is having on creating human connection and friendship.

Many clients have expressed their appreciation of the Seniors program and have voiced how the OPAP services have encouraged them to overcome their social anxiety in a safe, welcoming, and encouraging environment.

This year has been an incredibly challenging and emotional year for many. However, it has truly demonstrated the strength and spirit of 'community'. Thank you to all our participants for the support and wisdom you offer to each other during the easy and difficult times and the joy you bring to the Senior's program. It has truly

been an honour to be a part of this program.

Fay



Personal & Relationship Counselling

Funded by the *Department of Children, Youth Justice and Multicultural Affairs*

Lenore Hall

During the past year, KENG continued to provide free personal & relationship counselling every Thursday morning for people in the Logan community. Thanks to COVID, it also continued with on-line sessions to benefit clients struggling with physical accessibility. The service has been accessed by a steady stream of new clients each month along with continuing clients for follow-up sessions, benefitting their mental health and well-being.

There has been particular focus on mental health in the community following COVID, but also following recent floods and the added life stressors that many are facing. Coming through the isolation that COVID imposed showed us the importance of person-to-person connection and the need for supportive relationships. COVID has added to the issues that clients have brought into counselling, including family and communication breakdown, depression, anxiety, grief and loss, life transitions, loneliness, parenting issues, schooling and bullying issues and rebuilding lives in the aftermath of domestic violence.

These issues highlight the massive need within society for understanding mental health, what contributes to mental and emotional well-being and resilience, and what we can do as individuals and as a community to recognise and address the tidal wave of mental health issues that are seen across hospitals, emergency settings, GP surgeries, schools and in community organisations such as KENG.

KENG is a community hub, that gathers together a team to provide a place of connection, a place for emergency relief for basic needs, for gaining skills in parenting, computers, or careers and a place where parents can have a few relief hours from child-rearing duties while attending their own skills or personal needs. The team works to address the physical, emotional, and mental well-being of community members and offers many opportunities to cross refer clients within the different areas of KENG. It is a place that “buzzes” with the hum of human-to-human connection. This hub works due to the active participation of many clients and volunteers from

the community that come into KENG’s orbit and by their participation contribute to the wonderful atmosphere of connection that prevails. It shows what coming together and working together can do to benefit community and provides a powerful antidote to mental health issues within the community.

As part of the team, counselling plays an important role in KENG to connect with clients, to provide a safe space to reflect, to reassess life’s challenges and realise or re-affirm potential strengths within each person. It also provides education about mental/emotional health, and often connects clients to other services within KENG or within the broader community. However, because the counselling service is time limited, there is a considerable wait time to see new clients and there is ongoing pressure for time to see repeat clients more frequently. For appointments, bookings can be made by contacting the office at KENG.

This past year KENG has also farewelled Fiona, who worked as counsellor for many years, making a rich contribution to the KENG community. Following in her footsteps, I acknowledge her efforts in providing the counselling service at KENG and I now seek to continue her legacy of positive outcomes, looking forward to playing my part to contribute to the mental health of the Logan community.

Lenore



SQW Build a Secure Future Program

Funded by the Department of Employment, Small Business and Training under the Skilling Queenslanders for Work Initiative

Sudhara Anandakumar and Louise Poole

The Skilling Queenslanders for Work (SQW) program offers opportunities to young people, mature aged workers, mothers returning to work, disadvantaged jobseekers, culturally and linguistically diverse people and those with barriers to employment and training to gain new skills and a nationally recognised qualification which will help them in their journey to find sustainable jobs.

KENG also offers wrap around support for all participants with assistance with resumes, interview skills and job search. We also assist participants with housing issues, emergency food parcels, fuel vouchers, access to counsellors, parenting programs and childcare. SQW funds are also used to purchase uniforms for students going on placement and to help with applying for blue cards, NDIS worker clearance and police certificates.

We are partnering with Major Training and Axiom College as the Registered Training Organizations for our training programs in 2021/2022. Programs delivered in this financial year include:

- Certificate III in Supply Chain Operations, TLI30319
- Certificate III in Individual Support, CHC33015 (2 Intakes)
- Certificate II in Hospitality, SIT20316

We are funded to recruit and support 60 students throughout the year. In addition, we also assist students from past years with updating resumes and job applications as needed. We have students from diverse backgrounds and ethnicities as well as ages ranging from 19 to 81 years old from the Logan and surrounding communities.

Along with the training organizations, we organize placements for students and have employer visits organized with talks by employers. We have formed connections with aged care facilities and continue to build connections with local employers and cafes/restaurants to place the Hospitality students.

We have utilised a range of marketing skills to promote our programs including social media, community notice boards, flyers at shopping centres, Centrelink offices, neighbourhood centres, libraries and promoting through past participants. We have had articles published in the Jimboomba Times, My City Logan and had air time on the local radio stations.

Highlights

A highlight is that a participant who completed the Certificate III in Supply Chain Operations has started work at Weber South Pacific Pty Ltd through a contact at KENG. He works as an A1 Assembler. He has successfully finished the full qualification and obtained his forklift license. His employer stated that he is progressing well and that he is very hard working and asks lots of questions and keen to learn. The participant loves working and is enjoying his work. He is finding the work fairly easy thanks to the experience from the SQW training program.

Nine out of the 11 participants graduated with the Certificate III in Supply Chain Operations which also included forklift training. Five participants have already been successful in gaining paid employment. We are working with the others to assist them in finding work. Councillor Mindy Russell attended the graduation which was a successful event and one of the students from a refugee background gave an inspiring speech on what it meant to him to have the help and support of KENG staff to be able to complete training.



Representatives from the Department of Employment, Small Business and Training were very helpful and supportive through the challenges and highlights of the programs.

Sudhara



***Cert III Supply Chain
Operations Graduation***



***Cert III Individual Support students
during manual handling training***

***One of the SQW
participants at work***



LUCY'S STORY

During a recent conversation, Lucy shared her thoughts on the difficulties currently facing many families who are homeless or on the brink of experiencing homelessness and in dire need of suitable accommodation



“... families are being hit hard with inflation, rental prices going through the roof, overcrowding of applications and not enough public housing systems to put families and single parent families in homes. I believe there are many families out there, I was just one of the lucky ones who found KENG and got help which I am so grateful for. I know many people younger and the younger generations who will right now be feeling the pressure and stress of the current housing market. I feel for them”.

Lucy, her son Simon aged 13, her daughter Molly aged 17 and her nephew Lachlan aged 18 were couch surfing with her elderly parents as a temporary measure when Lucy was first in contact with the KENG ISA team. Lucy, Simon, Molly and Lachlan had been previously sharing a private rental with an acquaintance however the co-tenancy relationship had broken down and the co-tenant had left without any notice; leaving Lucy to pay all rental costs as the primary income earner for her family. Lucy is employed by a reputable company, working night shifts in logistics however the regularity of her work was affected due to the imminent risk of homelessness that ultimately impacted her and her family's mental health and wellbeing.

To complicate matters even further, Lucy was then notified that her lessor had agreed to change leasing agents from one based in Southeast Queensland to one based in Sydney, with a possible exorbitant rent increase as a result. Understandably, this situation proved to be unsustainable for Lucy in the long term, so the family vacated the rental without accumulating any tenancy debts. Even though Lucy held a clear rental history, she discovered that it was near impossible to secure another private rental during the current housing crisis impacting Southeast Queensland.

Lucy had lived in Papua New Guinea until the age of 6 years then immigrated with her family to Australia in 1987. The family settled in Logan and over time were allocated a public housing rental. During the following years, Lucy gained an understanding of the Queensland social housing system and the changes which occurred to the system over time. During her initial intake into the KENG ISA program, Lucy said she had never previously been in a position where she required support from homelessness services so was unsure what was involved in the process of securing short-time housing and the types of services that may be offered by providers. Lucy was reassured that the KENG ISA team would assist Lucy and her family through this process and would provide targeted support in accordance with her family's needs. Once accommodated by KENG, Lucy received financial and in-kind support to transfer personal belongings from a storage facility to the KENG ISA property thus ensuring Lucy could recreate a home environment for her family.

Approximately one month after moving into the KENG ISA property, Lucy excitedly announced she had been able to secure a long-term, affordable private rental through a friend of the family located in her preferred suburb although was informed that the rental would not be available until some time in October. Lucy stated some concern that she and her family would be unable to relocate earlier however the time frame would allow the family plenty of time to prepare for the transition to their new home.

The KENG ISA team congratulated Lucy on such a wonderful housing outcome and reassured Lucy that she and her family would continue to be proactively supported by the team as the family begins their journey back into the private rental market.

¹Names have been changed to respect privacy

SUSAN'S STORY

One of the students who was a volunteer at KENG showed a keen interest in starting the Certificate III in Individual Support and gaining new skills which would enable her to find employment in the aged care/disability sector. She was a dedicated student, always punctual, eager to learn and asking questions. SQW staff helped her to update her resume and she applied to Carinity Home Care Logan for placement and was given paid employment while studying. Susan is learning a lot during her practical placement and finds it invaluable experience and is looking forward to continuing to work in the industry.



A large collage of 30 small photographs arranged in a grid-like fashion, showcasing various community events and group photos. The images depict people of different ages and ethnicities engaged in various activities: some are gardening, others are painting or crafting, and many are posing for group photos in outdoor settings. The photos are arranged in a grid-like fashion, with some images being larger than others, creating a dynamic and colorful visual summary of community life. The overall theme is one of social connection and shared activities.

Auditor's Report



Accountants Tax Agents & Auditors
ABN 94 056 298 492

Directors
Mark Schutters
James McKenzie
Jouhaina Ellis
Scott Laker

Report on the Audit of the Financial Report

Opinion

We have audited the financial report of Kingston East Neighbourhood Group Inc which comprises the statement of financial position as at the 30th of June 2022, the statement of comprehensive income, statement of changes in equity and statement of cash flows for the year then ended, and notes to the financial statements, including a summary of significant accounting policies, and the responsible entities' declaration.

In our opinion the financial report of Kingston East Neighbourhood Group Inc. has been prepared in accordance with Division 60 of the Australian Charities and Not-for-Profits Commission Act 2012, including:

- (a) giving a true and fair view of the registered entity's financial position as at the 30th of June 2022 and of its financial performance for the year then ended; and
- (a) complying with Australian Accounting Standards to the extent described in Note 1, and Division 60 of the Australian Charities and Not-for-profits Commission Regulation 2013.

Basis for opinion

We conducted our audit in accordance with Australian Auditing Standards. Our responsibilities under those standards are further described in the Auditor's Responsibilities for the Audit of the Financial Report section of our report. We are independent of the registered entity in accordance with the ethical requirements of the Accounting Professional and Ethical Standards Board's APES 110 Code of Ethics for Professional Accountants (the Code) that are relevant to our audit of the financial report in Australia. We have also fulfilled our other ethical responsibilities in accordance with the Code. We believe that the audit evidence we have obtained is sufficient and appropriate to provide a basis for our opinion.

Emphasis of Matter - Basis of Accounting

We draw attention to Note 1 to the financial report, which describes the basis of accounting. The financial report has been prepared for the purpose of fulfilling the registered entity's financial reporting responsibilities under the ACNC Act. As a result, the financial report may not be suitable for another purpose. Our opinion is not modified in respect of this matter.

Emphasis of Matter – Contingent Liability

We draw attention to Note 10 of the financial report, which describes the existence of a contingent liability relating to the disposal of 30 Defiance Road. Our opinion is not modified in respect of this matter.

Responsibility of the Responsible Entities (Committee) for the Financial Report

The committee of the registered entity are responsible for the preparation of the financial report that gives a true and fair view and have determined that the basis of preparation described in Note 1 to the financial report is appropriate to meet the requirements of the ACNC Act [and the needs of the members]. The committee's responsibility also includes such internal control as the committee determine is necessary to enable the preparation of a financial report that gives a true and fair view and is free from material misstatement, whether due to fraud or error.



Phone: (07) 3209 7700
Facsimile: (07) 3209 7189
Email: jgd@dickensons.com.au
Website: www.dickensons.com.au

Level 2, 3908 Pacific Highway, Loganholme QLD 4129

Liability limited by a scheme approved under Professional Standards Legislation

In preparing the financial report, the committee are responsible for assessing the registered entity's ability to continue as a going concern, disclosing, as applicable, matters relating to going concern and using the going concern basis of accounting unless the committee either intend to liquidate the registered entity or to cease operations, or have no realistic alternative but to do so.

The committee is responsible for overseeing the registered entity's financial reporting process.

Auditor's Responsibilities for the Audit of the Financial Report

Our objectives are to obtain reasonable assurance about whether the financial report as a whole is free from material misstatement, whether due to fraud or error, and to issue an auditor's report that includes our opinion. Reasonable assurance is a high level of assurance, but is not a guarantee that an audit conducted in accordance with the Australian Auditing Standards will always detect a material misstatement when it exists. Misstatements can arise from fraud or error and are considered material if, individually or in the aggregate, they could reasonably be expected to influence the economic decisions of users taken on the basis of the financial report.

As part of an audit in accordance with Australian Auditing Standards, we exercise professional judgement and maintain professional scepticism throughout the audit. We also:

- Identify and assess the risks of material misstatement of the financial report, whether due to fraud or error, design and perform audit procedures responsive to those risks, and obtain audit evidence that is sufficient and appropriate to provide a basis for our opinion. The risk of not detecting a material misstatement resulting from fraud is higher than for one resulting from error, as fraud may involve collusion, forgery, intentional omissions, misrepresentations, or the override of internal control.
- Obtain an understanding of internal control relevant to the audit in order to design audit procedures that are appropriate in the circumstances, but not for the purpose of expressing an opinion on the effectiveness of the registered entity's internal control.
- Evaluate the appropriateness of accounting policies used and the reasonableness of accounting estimates and related disclosures made by responsible entities.
- Conclude on the appropriateness of responsible entities' use of the going concern basis of accounting and, based on the audit evidence obtained, whether a material uncertainty exists related to events or conditions that may cast significant doubt on the registered entity's ability to continue as a going concern. If we conclude that a material uncertainty exists, we are required to draw attention in our auditor's report to the related disclosures in the financial report or, if such disclosures are inadequate, to modify our opinion. Our conclusions are based on the audit evidence obtained up to the date of our auditor's report. However, future events or conditions may cause the registered entity to cease to continue as a going concern.
- Evaluate the overall presentation, structure and content of the financial report, including the disclosures, and whether the financial report represents the underlying transactions and events in a manner that achieves fair presentation.

Signed on: 23/09/2022



James McKenzie

James McKenzie, Chartered Accountant
Dickensons Accountants
Lvl 2, 3908 Pacific Hwy, Loganholme QLD 4129

Statement by the Management Committee

Kingston East Neighbourhood Group Inc

ABN 43 596 714 005

Statement by Members of the Committee

For the year ended 30 June 2022

The Committee has determined that the association is not a reporting entity and that this special purpose financial report should be prepared in accordance with the accounting policies outlined in Note 1 to the financial statements.

In the opinion of the Committee the Income and Expenditure Statement, Statement of Financial Position, and Notes to the Financial Statements:

1. Presents fairly the financial position of Kingston East Neighbourhood Group Inc as at 30 June 2022 and its performance for the year ended on that date.
2. At the date of this statement, there are reasonable grounds to believe that the association will be able to pay its debts as and when they fall due.

This statement is made in accordance with a resolution of the Committee and is signed for and on behalf of the Committee by:


24856D253F937DAB

Geoffrey Leeming
President


526E1FBFA51502DF

Nathan Baker
Treasurer

The accompanying notes form part of these financial statements.

Financial Statements

Kingston East Neighbourhood Group Inc

ABN 43 596 714 005

Profit and Loss Statement

For the year ended 30 June 2022

	2022 \$	2021 \$
Operating profit before income tax	662,697.14	407,181.28
Income tax (credit) attributable to operating profit (loss)		
Operating profit after income tax	662,697.14	407,181.28
Retained profits at the beginning of the financial year	1,178,504.51	830,336.15
Loss from change in accounting policy		(59,012.92)
Total available for appropriation	1,841,201.65	1,178,504.51
Retained profits at the end of the financial year	1,841,201.65	1,178,504.51

The accompanying notes form part of these financial statements.

Kingston East Neighbourhood Group Inc

ABN 43 596 714 005

Balance Sheet as at 30 June 2022

	Note	2022 \$	2021 \$
Assets			
Current Assets			
Cash assets	<u>2</u>	2,273,656.03	1,154,769.46
Receivables	<u>3</u>	20,903.10	141,338.94
Other	<u>4</u>	34,180.39	22,552.59
Total Current Assets		2,328,739.52	1,318,660.99
Non-Current Assets			
Property, plant and equipment	<u>5</u>	109,156.93	819,356.60
Total Non-Current Assets		109,156.93	819,356.60
Total Assets		2,437,896.45	2,138,017.59
Liabilities			
Current Liabilities			
Payables	<u>6</u>	16,088.79	43,134.79
Financial liabilities		9,343.09	12,754.40
Current tax liabilities	<u>7</u>	31,454.52	31,088.60
Provisions	<u>8</u>	37,268.04	61,580.73
Other	<u>9</u>	271,761.13	187,790.53
Total Current Liabilities		365,915.57	336,349.05
Non-Current Liabilities			
Financial liabilities		12,573.17	19,087.25
Provisions	<u>8</u>	218,206.06	191,644.78
Total Non-Current Liabilities		230,779.23	210,732.03
Total Liabilities		596,694.80	547,081.08
Net Assets		1,841,201.65	1,590,936.51
Equity			
Reserves			412,432.00
Retained profits		1,841,201.65	1,178,504.51
Total Members' Funds		1,841,201.65	1,590,936.51

The accompanying notes form part of these financial statements.

Acknowledgements

There are a number of groups and individuals who have assisted us in many ways over the past year. We extend our sincere appreciation to:

- Access Community Services Limited
- Addiction & Mental Health Services, Metro South
- Audi Centre South Brisbane
- ANZ Bank, Kuraby
- Beenleigh Neighbourhood Centre
- Bendigo Bank
- Blue Stone Medical & Professional
- Bridges Reconnect
- Broncos Brisbane
- Brotherhood of St Laurence
- Callaway Homes
- Carbrook Golf Club
- Centre Against Sexual Violence
- Chris Mundy
- Christopher's Fine Foods
- Circle of Security International
- City Caravans
- Coast Sure Insurance Brokers
- Coles, Logan Central
- Community Recovery
- COTA (Council on the Ageing)
- Councillor Mindy Russell, Division 3, Logan City Council
- Daisy Hill Pharmacy
- Daisy Hill & Southside Family Day Care
- Denise Morgan, Children's Health Queensland
- Department of Education and Training, Office of Early Childhood Education and Care
- Department of Child Safety, Loganlea
- Department of Child Safety, Brisbane
- Department of Child Safety, South East Region
- Department of Child Safety, Youth and Women
- Department of Children, Youth Justice and Multicultural Affairs
- Department of Communities, Housing and Digital Economy
- Department of Employment, Small Business and Training
- Department of Seniors, Disability Services and Aboriginal and Torres Strait Islander Partnerships
- Department of Health
- Department of Social Services
- Dickensons Accountants
- Dr Jim Chalmers MP, Federal Member for Rankin
- Early Years Initiative, Queensland Health
- Family Relationships Centre, Logan
- Fepau God is Good Church
- First 5 Forever
- Foodbank
- 4Voices
- Gambling Community Benefit Fund
- Gibbs Wright Litigation Lawyers
- GIVIT– Goods for Good Causes
- Girls Day Out in STEM
- Go-Creative
- Go Duckling
- Good Shepherd Microfinance
- Griffith University, Logan and Nathan Campuses
- Gunya Meta Inc.
- Helen Betts, Griffith University
- Hon Cameron Dick MP, Treasurer, Minister for Investment
- Hon Shannon Fentiman MP, Attorney-General and Minister for Justice, Minister for Women and Minister for the Prevention of Domestic and Family Violence
- IKEA, Logan
- Liz Irvine, Mabel Park State High School
- Jean Ridgeway Consultancy
- Karen Denham, Queensland NILS
- Karulbo
- Kingston State School
- Legal Aid Queensland
- Logan Beaudesert Perinatal Wellbeing Service
- Logan City Council Maintenance Team
- Logan Community Elders
- Logan East Community Neighbourhood Centre
- Logan Hospital
- Logan Libraries
- Logan Make and Do Woodcrafters
- Logan Office of Economic Development

Acknowledgements

- Logan Together
- Loganlea Community Centre
- Logan Village Community Centre
- Mary Cutts, The Mind Body Spirit Connection
- Major Training Services
- Matt Bolton, Hope Centre
- Monash University
- Monte Lupo
- Montrose Therapy & Respite Services
- Multicultural Australia
- Multilink Community Services Inc.
- NAPCAN, Preventing Child Abuse
- One Voice Mobile Showers
- Office National, Beenleigh
- Playgroup Association Queensland
- Peach Tree – Perinatal Wellness
- Peak Care Queensland Inc.
- Petriea Skitek
- Police-Citizens Youth Club (PCYC)
- Princess Alexandria Hospital
- Pro Bono Australia
- QCOS, Queensland Council of Social Service
- QPASTT Inc.
- Queensland Community Alliance
- Queensland Department of Education
- Queensland Families & Communities Association
- Queensland Health
- Queensland Shelter
- Queensland University of Technology (QUT)
- Radio 101FM
- Rainbow House, Daisy Hill State School
- Relationships Australia
- Revival Church International
- Reclink Australia
- Roger Fairman
- Rotary Club of Logan
- Rotary Club of Loganholme
- Romero Multicultural Hub
- Rugby Union Queensland
- Sally Terare
- Salvation Army
- Sharyn Casey, Real Options Consultancy
- Shirley Duckett, Training, Professional Supervision and Consultancy
- St Marks Anglican Church, Daisy Hill
- St Cocos
- The Benevolent Society
- The Centre for Women & Co
- The Community Centres and Family Support Network Association
- The Family Place
- The Lady Musgrave Trust
- Topdog Fencing & Topdog Ladders
- Uncle Barry Watson
- Uniting Care Intensive Family Support Service
- Uniting Care Family and Child Connect
- University of Queensland
- Volunteering Queensland
- W Hotel
- Weber Pacific
- Wesley Mission
- Women's Legal Service Qld
- Woolworths Springwood
- Yourtown
- YFS Ltd
- Yarrabilba Community Association
- Youth Justice Program
- Zonta Club of Brisbane South



SUBMISSION FOR FUNDING OF SERVICES AT TUDOR PARK COMMUNITY CENTRE

Kingston East Neighbourhood Group Inc
ABN: 43 596 714 005

177 Meakin Road, Slacks Creek Q 4127
PO Box 622, Woodridge Q 4114
07 3808 1684
admin@keng.org.au
www.keng.org.au





In 2020/21 every \$1 invested by the Queensland Government into Community Centres resulted in \$4.81 of community value

1. BACKGROUND:

Kingston East Neighbourhood Group Inc (KENG) is a not-for-profit organisation that has served the Logan City Community for over 37 years. KENG operates a Community Centre in Slacks Creek which acts as a focal point for the whole community, promoting personal well-being through access to information, resources and learning opportunities that respond to the needs of the community. It is an evolving, dynamic organisation, whose purpose is to nurture, develop, extend and respond to local needs and issues in a beneficial and enabling way. While the Community Centre is based in Slacks Creek, KENG's programs include outreach support and its footprint spreads from Slacks Creek through to Loganholme.

KENG's Mission:

Connecting People, Building Futures

KENG delivers the following range of services and programs covering all stages and ages of life:



KENG's Vision:

To create an inclusive empowered community

KENG's 2021 Highlights



Helped 1,000 children with their school basic needs



700 families assisted with Emergency Relief monthly



5 x Skilling Queensland Workers Programs



Manage and support of 13 ISA Houses



Facilitated 5 Community Playgroups



Provided employment for 35 locals

In accordance with its strategic planning goals, KENG has been dedicated to finding a second footprint in Logan City to mirror and grow the many programs and services that are currently offered at the centre. In August 2021, the Logan City Council advertised an Expression of Interest seeking a not-for-profit community organisation to take over management of the Tudor Park Community Centre which is situated at 71-81 Clarks Rd, Loganholme, Queensland, 4129. This community centre was built by Logan City Council in 2012 to respond to the increasing population growth in the Loganholme area and increasing needs of the community. It was originally managed by the Police Citizen's Youth Club and predominantly used to deliver its recreational programs for young people. KENG successfully tendered for the facility management of the Centre and is proposing to deliver a wide range of programs to ensure the Centre is accessible to and meets the needs of the local community.

2. DEMOGRAPHICS - LOGANHOLME-TANAH MERAH STATISTICAL AREA DIVISION 10

Tudor Park Community Centre is located in the suburb of Loganholme, the council of Logan, the state electorate of Waterford and the federal electorate of Forde.

For statistical analysis purposes, it sits within Loganholme - Tanah Merah Statistical Area Level 2.

Key demographics of this area are as follows:

- The median age of people in this area is 34 - which is younger than the median age for Qld (37) or Australia (38).
- Children feature highly in the local area with 7.8% aged 0-4 (compared to 6.3% for Australia), and 8% are aged 5-9 years. (6.7% for Qld). Overall Children aged 0-14 years make up 22.3% of the population (the proportion for Qld is 19.4% and 18.7% for Australia).
- People aged 65 years and over made up 10.7% of the population, which is lower than the proportion for Qld (15.3%).
- 17.3% of families are one parent families, which is greater than the proportion for Qld (16.5%) and Australia (15.8%).
- 69.8% of people were born in Australia. The proportion of Queenslanders born in Australia was higher at 71.1%. The most common countries of birth for those born outside Australia were New Zealand (8.7%), England (4.3%), South Africa 1.0%), Philippines (0.7%) and China (0.6%). The top languages other than English are Mandarin, Samoan, Spanish, Arabic and Hindi.
- 2.2% of the population have identified as Aboriginal and/or Torres Strait Islander.



Neighbourhood and Community Centres in Queensland
supported over 1.6 Million People in 2020/21

3. PROGRAMS TO BE DELIVERED AT THE TUDOR PARK CENTRE

As with its current Community Centre, KENG will aim to ensure that Tudor Park is accessible to the local community and provides services in accordance with local needs. Based on its preliminary discussions with the community and based on analysis of relevant data, KENG aims to deliver a range of programs that cater for the needs of bubs through to seniors.

Bub Hub	Offer a collaborative, continuity of care model of pregnancy and post birth care for Mother and baby.
Playgroups	Providing an opportunity for parents and children to engage with others make new friends and share in new experiences.
Housing and Homelessness Support	Deliver housing and homelessness support to community members.
Weekend Playgroup for Dads	A dedicated playgroup for dads and children to come together in a supportive and engaging environment.
School Holiday Programs	School holiday programs for children, youth, and families.
Emergency Relief	Support for vulnerable community members.
After School and Holiday Care, and a Homework Club	Positive place for children and youth to meet new friends, learn new skills, have fun and receive support.
No Interest Loans and Financial Literacy	A community credit program for the purchase of essential goods and services.
Indigenous bush food community garden	A green space for the community to be involved in the garden's upkeep and sharing the rewards.
Youth Services	Helping to create new futures for young people.
Evidence Based Parenting Classes	First baby, literacy, childhood, and parenting programs.
Tai Chi, Yoga, Pilates	Suitable for all ages and abilities; enhance coordination and flexibility, core-strength, and cardiovascular health, breathing techniques and body-mind connection; build new networks and friendships.
Arts and Craft Groups	A social and creative opportunity to connect and develop skills.
Life Skills Workshops	Empowering people to build independence, resilience, and social connectedness to maximise their potential.
Occasional Childcare	A limited hours childcare centre.
Social Groups for Older People Wellbeing workshops and cooking for seniors	Opportunities for seniors to participate in programs and activities that enhance health and wellbeing, lifelong learning, access to resources and information, safety, and participation, that broaden friendship and network groups, as well as contribute to their community by sharing skills, knowledge and wisdom through volunteering.

Self-help groups, Counselling, and Therapeutic programs	Support services for the local community.
Computer Club	Receive support with all PC, iPad, Tablet and Smart Phone challenges; build networks and friendships.
Skilling Queenslanders for Work Programs	Employment and training programs in: Hospitality, Aged Care, Warehouse Management.
Great Mates Meet	A weekly men's group for men to come together, chat and build support networks.
Street Library	A community book sharing space.
Social enterprise specifically focused on supporting Migrant women into small business	Start up guidance and mentoring support for migrant women.
Community Events	NAIDOC week, Child Protection Week, Mental Health Week, International Women's Day, Neighbour Day.
Information sessions, workshops, guest speakers	Various.
Facility Hire	An online booking site where organisations and community members can seek room or hall hire to deliver programs and activities, that are in keeping with the purpose and scope of the Centre.







Kingston East Neighbourhood Group Inc.

Meakin Park, 177 Meakin Road, Slacks Creek Q 4127
Tudor Park, 71-78 Clarks Road, Loganholme Q 4129
PO Box 622 Woodridge Q 4114

P: 07 3808 1684 | E: admin@keng.org.au | W: www.keng.org.au